



Leggett & James

The Vale of Evesham Property Experts



54 Elm Road

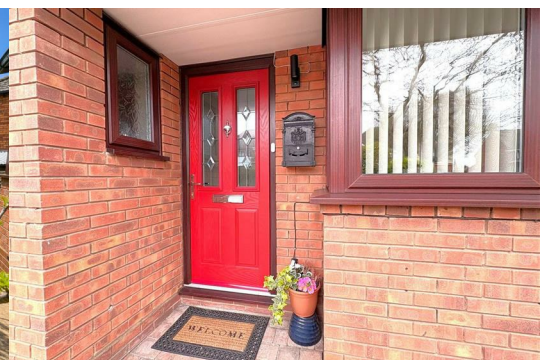
, Evesham, WR11 3DW

Offers Over £350,000



WELL PRESENTED THREE BEDROOM DETACHED FAMILY HOME WITH GENEROUS RECEPTION SPACE, DRIVEWAY & GARAGE AND ENSUITE SHOWER ROOM TO THE MAIN BEDROOM

This beautifully presented three bedroom family home boasts generous reception space with a generous lounge/diner, conservatory and kitchen/breakfast room. The property further benefits from a mature southerly facing rear garden, driveway & garage and an ensuite shower room to the main bedroom.



The Property

As you approach the property you will find a driveway offering side by side parking for two vehicles, well maintained fore garden and side gate offering access to the mature southerly rear garden.

The spacious ground floor comprises: entrance hall, ground floor WC, kitchen/breakfast room, lounge/diner, conservatory.

The first floor comprises: first floor landing, three well proportioned bedrooms (all with built in wardrobes), ensuite shower room to the main bedroom and family bathroom.

The property has gas central heating and double glazing throughout.

Tenure - Freehold
Council Tax band - D

Entrance Hall

The welcoming entrance hall has a panel radiator, stairs rising to the first floor and useful understairs storage cupboard, which has light & power.

Ground Floor WC 5'10 x 3'8 (1.78m x 1.12m)

The modern ground floor WC has a double glazed window to the side aspect and panel radiator. The suite comprises of a low level WC and hand wash basin.

Kitchen/Breakfast Room 18'4 x 8'7 (5.59m x 2.62m)

The generous kitchen/breakfast room has a double glazed bay window to the front aspect, double glazed window to the side aspect, double glazed door leading to the side passage and panel radiator. The kitchen comprises of a range of wall & base units and a fully integrated kitchen. The integrated appliances include washing machine, tumble dryer, dishwasher, fridge freezer, Neff electric eye level oven & grill, Neff electric hob, Neff microwave, sink with drainer. The room has additional storage created by the current owners and ample room in the bay window for a breakfast table

Lounge 14'7 x 11'10 (4.45m x 3.61m)

The perfect place to relax and unwind, the lounge has double glazed sliding doors opening into the conservatory and panel radiator. The room is open to the dining area, creating a fantastic lounge/diner ideal for those that like to entertain.

Dining Area 9'7 x 8'1 (2.92m x 2.46m)

The dining area is open to the lounge, creating a lovely lounge/diner, perfect for modern day family living. The room has a double glazed window to the rear aspect and could be used for a number of other purposes, such as a work from home space or play room.

Conservatory 10'10 x 7'10 (3.30m x 2.39m)

The well appointed conservatory has double glazed windows to all three sides and patio doors opening onto the mature rear garden.

First Floor Landing

The light and airy first floor landing has a double glazed window to the side aspect and doors opening into three well proportioned bedrooms and the family bathroom.

Bedroom One 11'8 x 11'7 (3.56m x 3.53m)

Double bedroom with double glazed window to the rear aspect, panel radiator, built in wardrobes and access to its own ensuite shower room.

Ensuite Shower Room 8'7 x 3'7 (2.62m x 1.09m)

The modern ensuite shower room has a double glazed window to the rear aspect and panel radiator. The suite comprises of a low level WC, hand wash basin and shower cubicle.

Bedroom Two 11'1 x 8'9 (3.38m x 2.67m)

Double bedroom with double glazed window to the front aspect, panel radiator and built in wardrobes.

Bedroom Three 14'4 x 7'9 (4.37m x 2.36m)

Generous bedroom with double glazed window to the rear aspect, panel radiator and built in wardrobes.

Bathroom 7'10 x 6'5 (2.39m x 1.96m)

The family bathroom has a double glazed window to the front aspect, panel radiator and useful storage cupboard. The modern suite comprises of a low level WC, hand wash basin, bath with shower over and shower screen.

Garage 16'7 x 7'10 (5.05m x 2.39m)

The useful garage has a traditional 'up and over' style garage door to the front aspect. The garage has light, power and eaves storage.

Outside

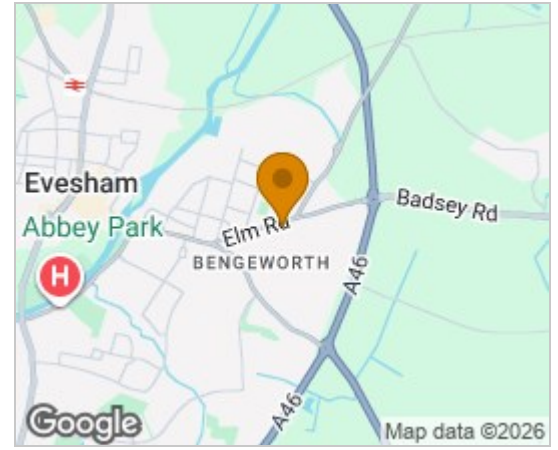
Upon arrival at the property you will find a driveway offering side by side parking for two vehicles, well maintained fore garden and side gate offering access to the mature rear garden.

At the rear of the home is a beautifully kept and mature rear garden with an array of trees, bush's and shrubs. Steps lead down from the conservatory to a generous patio & lawn with a garden shed in the far corner.

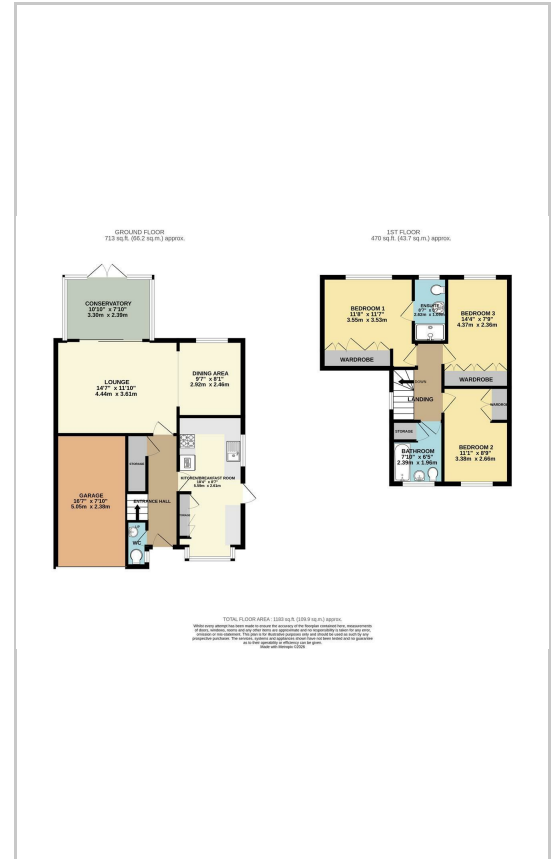
Referrals

We routinely refer to the below companies in connection with our business. It is your decision whether you choose to deal with these. Should you decide to use a company below, referred by Leggett & James Ltd, you should know that Leggett & James Ltd would receive the referral fees as stated. Team Property Services £100 per transaction on completion of sale and £30 of Love2Shop vouchers on completion of sale per transaction.

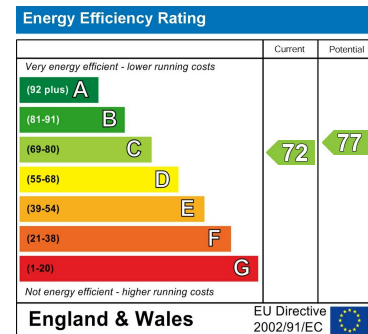
Area Map



Floor Plans



Energy Efficiency Graph



These particulars, whilst believed to be accurate are set out as a general outline only for guidance and do not constitute any part of an offer or contract. Intending purchasers should not rely on them as statements of representation of fact, but must satisfy themselves by inspection or otherwise as to their accuracy. No person in this firm's employment has the authority to make or give any representation or warranty in respect of the property.